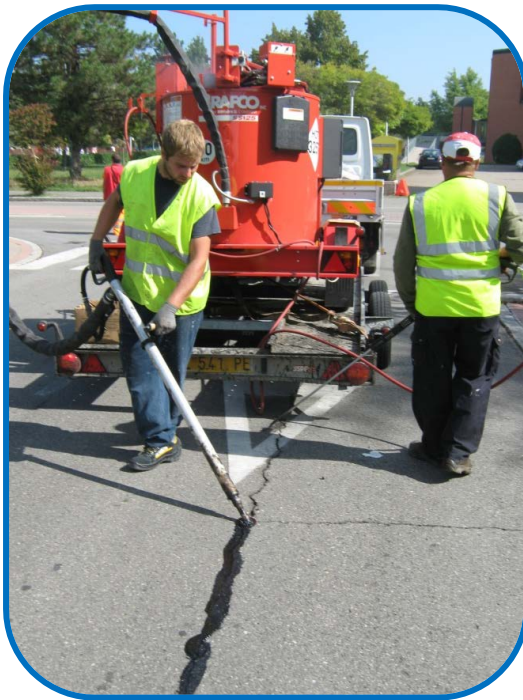




## **CRACK SEALING and POLYPATCH SYSTEM**

***PREVENTIVE MAINTENANCE OF ROADS AND AIRPORTS  
PAVEMENTS***



### **RODECO Group**

Via Ridondello, 37-27058 VOGHERA (PV) ITALY Tel. (+39) 0383 213532 (+39) 0383 647125 - Fax (+39) 0383 214447

Via Alessandro Volta n. 1/3 - 09032 ASSEMINI (CA) - ITALY - Tel. e Fax (+39) 070 2110427

Villaggio della Cooperazione, 4 - 30020 MARCON (VE) Tel. (+39) 334.1124094 - Fax (+39) 0383 214447

[www.rodéco.it](http://www.rodéco.it) - [rodéco@rodéco.it](mailto:rodéco@rodéco.it)

Crack sealing is one of the most effective preventive maintenance of roads and airports pavements, which allows to stop the water infiltration inside the layers below the pavement surface. This type of maintenance avoids the deterioration of cracking that can develop in alligator crackings and potholes.



*Routing, clearing and crack sealing*

Polypatch technology consists in replacing all the broken/cracked material on the edge/corner of the concrete slabs up to the required depth; after pavement cleaning, the pavement can be filled with Polypatch asphalt.

Working steps:

- Cutting of the distressed area, removing of the cracked material up to the non-cracked concrete and cleaning of the area;
- Heating of the surface and the edges up to 80°C;
- Laying of primer;
- Filling with Polypatch a 180/190° C in consecutive layers with 20-30 mm of thickness;
- Levelling of the final surface.

